

R-WIN 32 User's Guide

© 1991-98, Proxima Systems. All rights reserved.

R-WIN® is registered trademark of Proxima Systems.

Microsoft®, MS-DOS® are registered trademarks, Windows™ and Windows NT™ are trademarks of Microsoft Corporation.

TrueType® is registered trademark of Apple Computer, Inc.

Contents

R-WIN 32 User's Guide	1
Contents	2
About R-WIN 32.....	3
Chapter 1 R-WIN Installation	3
System requirements	3
Starting R-WIN 32 installation.....	3
Chapter 2 Cyrillic Support for DOS Prompt	4
Chapter 3 Using R-WIN 32.....	5
R-WIN Indicator	5
R-WIN Indicator Menu	5
Switching Keyboard Layouts	5
Setting R-WIN Options.....	5
Reordering the List of Current Layouts	5
Installing Additional Keyboard Layouts	6
Changing the Hot Key	7
Selecting Layout Sounds	7
Changing Flag Picture of Layout.....	8
Changing Font for Drawing Indicator's Short Layout Name.....	9
Changing Other Options.....	9
If Cyrillic letters disappeared	9
Uninstalling R-WIN	10
Chapter 4 R-WIN 32 Applications	10
R-WIN Keyboard	10
R-WIN Editor & Text Converter.....	11
R-WIN Keyboard Editor	11

About R-WIN 32

R-WIN 32 Multilingual Support System allows you to use the different alphabets (including Cyrillic) in Windows NT and Windows 95 operating systems.

R-WIN 32 includes: Setup program, TrueType and raster fonts; Indicator of keyboard state and utility applications for effective work with many Windows applications.

Chapter 1 R-WIN Installation

System requirements

Operating system Windows 95, Windows NT 4.0 or higher;

Free hard disk space — 3,5 Mb.

*Note. For earlier versions of Windows operating systems you need the earlier version of R-WIN exactly for this operating system. For example, for Windows 3.1 you need **R-WIN 16** for Windows 3.1.*

Starting R-WIN 32 installation

1. Insert compact disk in CD-ROM drive of you computer.
2. Open the Folder **My Computer**. Select CD-ROM drive and run *Cdsetup.exe*. Press **R-WIN 32 Setup** button to install R-WIN.

R-WIN installation is started.

The dialog box **R-WIN Setup** appears.



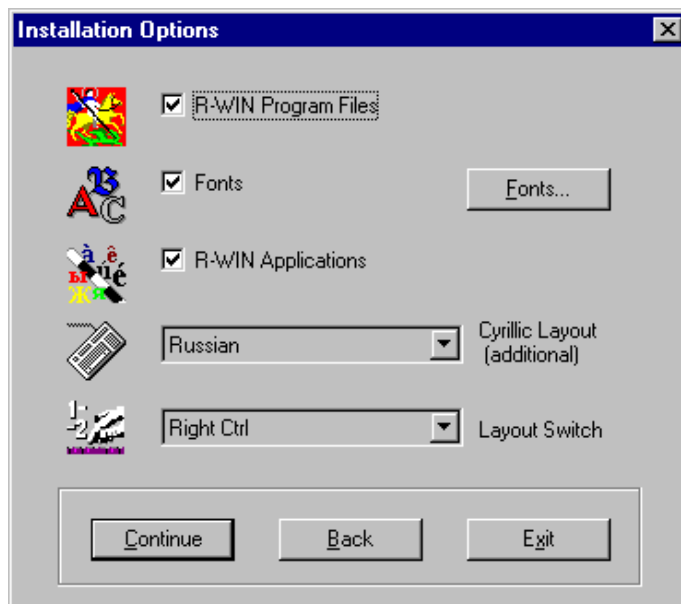
In this dialog box you need to select the option *Regional Settings*. The selection of this option depends on the language of applications you are about to use in future. For example, if you want to work with Russian programs you must select country «Russia». If you want to work only with English applications you can select any country (normally you should select the country that is already selected in the Regional Settings of Windows Control Panel). To work with German applications you need to select «Germany». The table below will help you to make correct selection.

Table 1. The examples of correct selection of option «Regional Settings» depending on the version of operating system and the language of user's application.

	<i>English version of Word for Windows</i>	<i>German version of Word for Windows</i>	<i>Russian version of Word for Windows</i>
<i>English version of Windows</i>	Any country, for example, United States or United Kingdom	Germany	Russia
<i>German version of Windows</i>	Germany	Germany	Russia
<i>Russian version of Windows</i>	Russia	Germany	Russia

Also in this dialog box you can choose the folder (directory) in which R-WIN files will be copied (by default it is C:\WINDOWS\RWIN or C:\WINNT\RWIN, but you can change it, for example, to C:\Programs\Rwin). You can press **Browse...** button and select some existing folder.

Then the **Installation Options** dialog box appears.



Depending on your operating system R-WIN Setup program chooses optimal default installation options, so that in the most cases you can select **Continue** and **OK** buttons in the dialog boxes of R-WIN 32 Setup program.

Then R-WIN Setup copies files from compact disk to the hard disk. At the end of installation the dialog box appears in which you are informed that the installation is successfully finished and you are prompted to reboot computer or return to Windows. Choose «Reboot System» to take R-WIN in effect.

After Windows is restarted new R-WIN submenu appears in Windows menu **Start/Programs**. You can run R-WIN applications from this menu. Also the icon with R-WIN Read Me file is placed to this menu (it is recommended to read this document).

At this point the R-WIN installation is finished.

Don't forget to fill in the R-WIN Registration Card and send it to the Proxima Systems. In this case you will be regularly informed about R-WIN updates. As an alternative option you can fill in the Internet version of R-WIN Registration Card on the <http://www.proxima.ru> site and send it via e-mail.

Chapter 2 Cyrillic Support for DOS Prompt

You can skip this chapter if you will not work with Cyrillic DOS programs running in DOS Prompt under Windows 95.

R-WIN doesn't install Cyrillic Support for full-screen mode of DOS Prompt. (You can switch between window mode and full-screen mode of DOS Prompt using short cut ALT+ENTER). If you want to work with Cyrillic in full-screen mode, you need to install Cyrillic Support for DOS Prompt.

You need to add commands to CONFIG.SYS and AUTOEXEC.BAT files:

To file **AUTOEXEC.BAT**:

```
MODE CON CODEPAGE PREPARE=((866) C:\DOS\EGA3.CPI)
CHCP 866
KEYB RU,,C:\DOS\KEYBOARD.SYS /ID:093
```

To file **CONFIG.SYS**:

```
COUNTRY=007,,C:\DOS\COUNTRY.SYS
DEVICE=C:\DOS\DISPLAY.SYS CON=(EGA,,1)
INSTALL=C:\DOS\NLSFUNC.EXE C:\DOS\COUNTRY.SYS
```

For more information, see COUNTRY.TXT, included in MS-DOS or see your Windows 95 or MS-DOS User's Guide.

NOTE: KBDRWIN.COM program on disk of R-WIN is Cyrillic keyboard driver R-WIN 4.0 for DOS. It is unsupported tool provided by Proxima Systems «as is». See RWREADME.DOC file for more information about installation and using this program.

Chapter 3 Using R-WIN 32

IMPORTANT NOTE! If you have Windows 95 it is strongly recommended to set the option *Multilanguage Support* in Windows Setup.

To check if you need to set this option run WordPad text editor (it is included in Windows 95, menu Accessories). Open the list of fonts on the toolbar. If you do not see the font with the name **Arial (Cyrillic)** in the list, then you need to add multilingual support in Windows 95.

To set multilingual support in Windows 95 choose Windows menu command: **Start/Settings/Control Panel**, select item *Add/Remove Programs*. **Add/Remove Programs Properties** dialog box appears. Select tab *Windows Setup*, set check mark *Multilanguage Support*, press **Details...** button, set check mark *Cyrillic language support*, press **OK** button, and again press **OK** button.

R-WIN Indicator

Indicator is small horizontal bar with state flag, that corresponds to current keyboard layout, short name of current layout and current time (you can choose the option not to show current time on R-WIN Indicator).



As soon as R-WIN is installed and Windows restarted R-WIN indicator is located in the upper right corner of the screen. Using mouse you can move R-WIN Indicator at any position on the screen.

R-WIN Indicator Menu

Click on the R-WIN Indicator by the right mouse button. R-WIN menu appears. Menu commands are described in the table below.

Menu Command	Purpose
<i>Move...</i>	Move indicator on the screen using keyboard keys with arrows.
<i>Close</i>	Close R-WIN Indicator.
<i>Menu: in Russian</i>	Change the language of R-WIN Indicator menu and dialog boxes to Russian.
<i>Options...</i>	Open <i>Options</i> dialog box. In this dialog box you can change R-WIN Indicator appearance and other options.
<i>Fonts...</i>	View the list of fonts currently installed in Windows.
<i>Keyboard...</i>	Open Keyboard Properties dialog box (included in Control Panel). In this dialog box you can add, remove and set options for keyboard layouts.
<i>Help</i>	Help on R-WIN Indicator.
<i>About...</i>	Choose this command to find the information about Proxima Systems and it's dealers.

Switching Keyboard Layouts

R-WIN 32 work with the list of keyboard layouts that includes up to 5 layouts. 1st and 2nd layouts are most important (because you can switch between first two layouts using one-touch hot key, for example, CTRL), other three layouts are additional (to switch to additional keyboard layout you must press the short cut that was assigned to this layout, for example, CTRL+ALT+1).

To switch between 1st and 2nd layout press R-WIN hot key (by default, it is right CTRL key). The state flag on R-WIN Indicator changes and the sound is played.

Other way to switch the layouts is to click on the state flag of R-WIN Indicator by left mouse button.

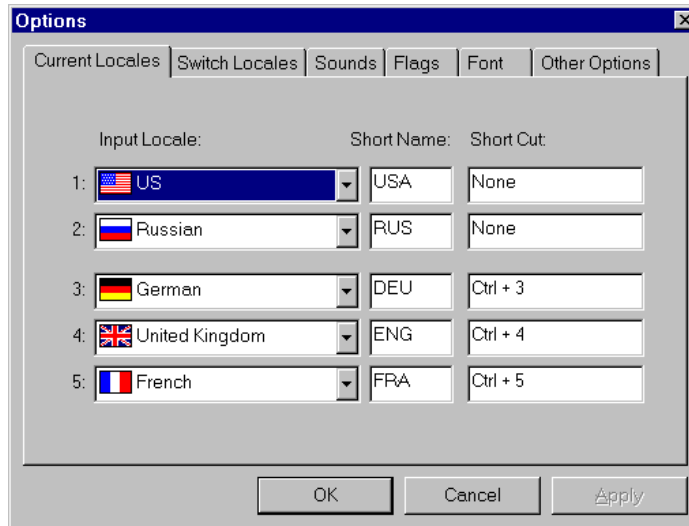
To change R-WIN hot key and to reorder the list of keyboard layouts choose **Options...** menu command.

Setting R-WIN Options

Open R-WIN menu and choose **Options...** menu command. **Options** dialog box appears.

Reordering the List of Current Layouts

Open R-WIN menu and choose **Options...** menu command. **Options** dialog box appears. In the dialog box **Options** choose *Current Locales* tab. (The terms «locale» and «keyboard layout» are used as synonyms in Windows.)



You can assign the short name (for example, „RUS“) and a short cut (for example, CTRL+ALT+1) to any keyboard layout (to any «locale»). As soon as you assigned the short cut to keyboard layout press this short cut working in say Word for Windows. The correspondent layout will be activated.

Short name of layout appears on the R-WIN Indicator.

Normally you need only two keyboard layouts. It is not so important which layout will be the 1st, and which will be the 2nd, but it is recommended to set Latin layout as 1st and Cyrillic layout as 2nd. For example, USA layout as 1st and Russian layout as 2nd.

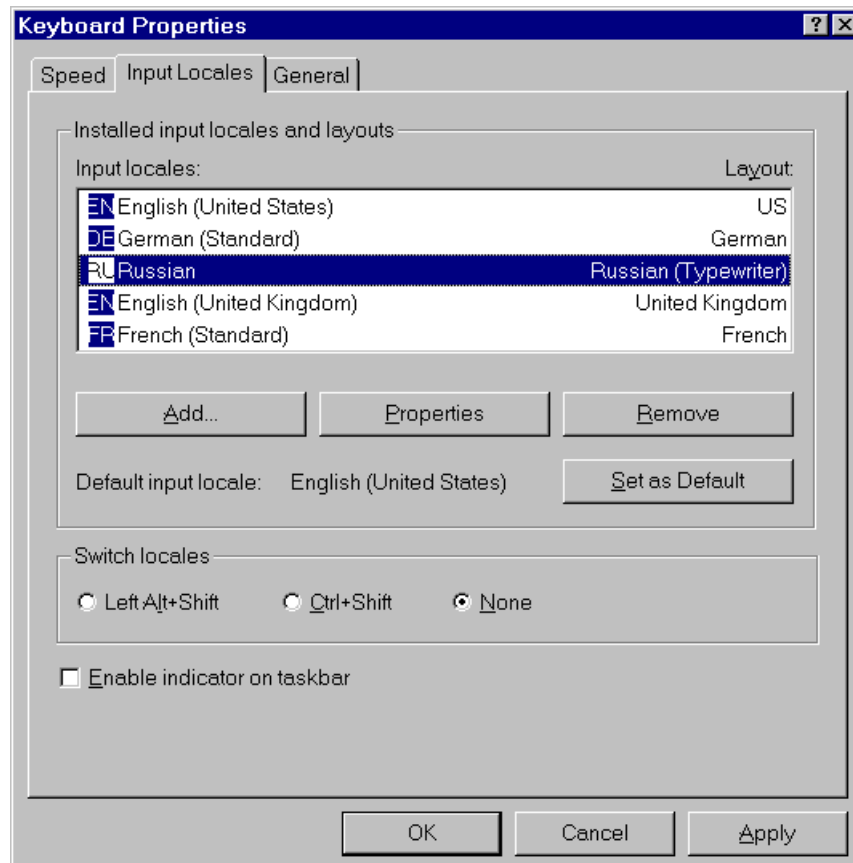
To set 1st layout open upper list of layouts *Input Locale 1:* and select one of layouts in the list. By the same way you can set 2nd and other layouts.

If you see only one layout in the list of layouts or you don't see the desired layout, then you need to install additional layouts in Windows Control Panel. See the section below.

Installing Additional Keyboard Layouts

R-WIN 32 Indicator can not install additional layouts but it uses the layouts that are installed in Windows Control Panel.

To install additional keyboard layout choose R-WIN Indicator **Keyboard...** menu command. The dialog box **Keyboard Properties** appears. Choose *Input Locales* tab (middle tab).



Press **Add...** button. The **Add Input Locale** dialog box with *Input Locale* list of keyboard layouts appears. Select desired keyboard layout from the list and press **OK**. The layout appears in the list *Installed input locales and layouts*. Select this layout and press **Properties** button. The **Input Locale Properties** dialog box with *Keyboard layout* the list appears. You can choose the layout variation for selected layout from this list. For example, for Russian layout you can choose its variation: «Russian (Typewriter)» and others.

In American version of Windows 95 Russian layouts are not installed in Windows Control Panel. R-WIN Setup program installs Russian layout and its variations. By default «Russian (OEM)» variation corresponds to the Russian layout of well known in Russia text editor called Lexicon. In the case you purchased R-WIN with computer, the «Russian (OEM)» layout can be the variation of layout provided by the computer vendor.

You can create layout variations using **Keyboard Editor** included in R-WIN 32. (Layout Wizard of Keyboard Editor saves the layout variations and add them to the list of layout variations in the **Input Locale Properties** dialog box described above.)

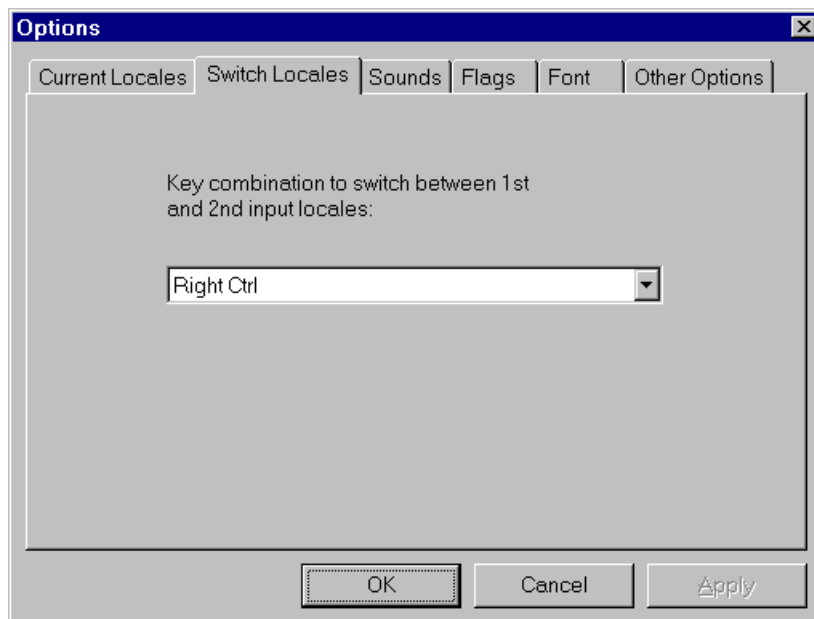
Press **OK** button as soon as you added new keyboard layout (input locale) and chose the variation of this layout. Sometimes Windows 95 prompts you to insert Windows 95 CD Installation Disk in CD-drive.

As soon as you installed additional keyboard layout in Windows Control Panel you can choose this new layout in the **Options** dialog box of R-WIN Indicator (*Current Locales* tab).

Unfortunately, the layout variations doesn't work in non-Russian versions of Word for Windows under Windows NT. One or two Russian letters appears in the typed text and then «?» symbol is typed instead of Russian letters. Follow the next steps if you want to use some layout variation, for example, «Russian (Mnemonic)». Make a backup copy of file C:\WINNT\SYSTEM32\kbdru.dll. Copy the file of layout variation (kldrsm.dll) under the name C:\WINNT\SYSTEM32\kbdru.dll and choose the main Russian layout («Russian») in Keyboard Properties dialog box of Control Panel. Restart Windows.

Changing the Hot Key

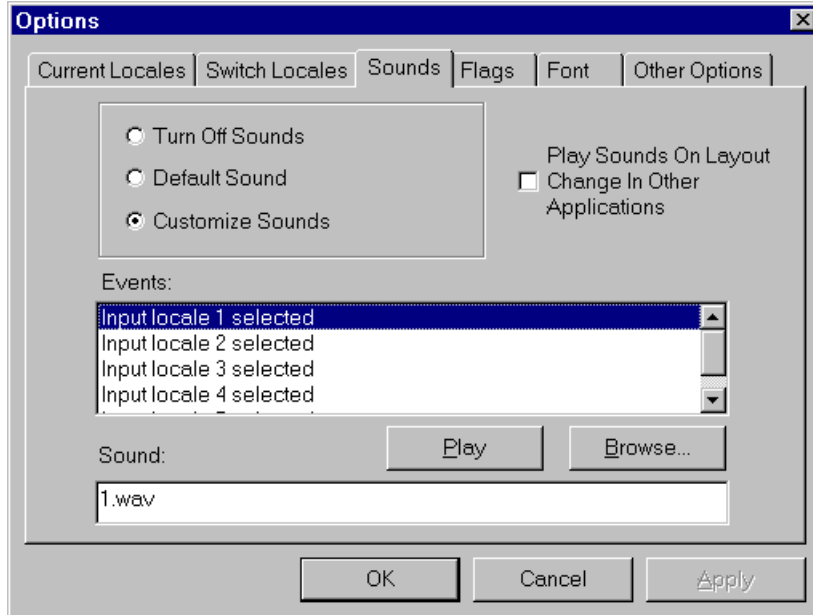
Open R-WIN menu and choose **Options...** menu command. **Options** dialog box appears. In the **Options** dialog box of R-WIN Indicator choose *Switch Locales* tab.



Open the list of Hot Keys and select the desired hot key. Press **OK** button to confirm changes or **Cancel** button to cancel changes.

Selecting Layout Sounds

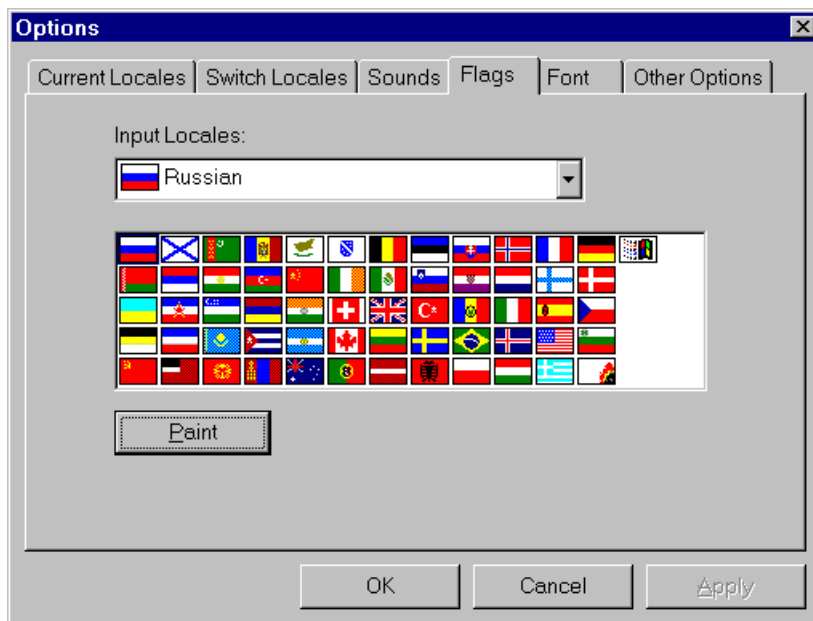
Open R-WIN menu and choose **Options...** menu command. **Options** dialog box appears. In the **Options** dialog box of R-WIN Indicator choose *Sounds* tab.



You can choose the sounds that are played when layout is activated. Choose option *Default Sounds* if your computer doesn't have sound card. Choose option *Customize Sounds* and select sound files for every keyboard layout (for every input locale). You can select only sound files that have .WAV extension (it is recommended to choose sounds that are played less than few seconds).

Changing Flag Picture of Layout

Open R-WIN menu and choose **Options...** menu command. **Options** dialog box appears. In the **Options** dialog box of R-WIN Indicator chose *Flags* tab.



Each layout has picture of state flag that is assigned to this layout. Indicator draws this picture in the left side of indicator's horizontal bar. By default the flag corresponds to the state flag of the layout. For example, for Russian layout it is national flag of Russia. R-WIN Indicator has the library of flag pictures. You can assign any picture from this library to any layout. Moreover, you can paint your own picture and assign it to any layout.

Open list *Input Locales* and select the layout which flag you desire to change. Choose one of the flags from the flag library (below the list of layouts).

If you want to repaint the flag, press button **Paint**. The graphical editor MS Paint (it is included to Windows) will run, and the picture of flag will be loaded in the MS Paint window. For convenience select 800% zoom factor (menu command **View/Zoom/Custom**, choose 800%), paint the flag without changing its size (22 pixels by 15 pixels), save the picture (menu command **File/Save**) and close MS Paint. To activate new picture of layout in R-WIN Indicator close R-WIN Indicator and start it again.

Changing Font for Drawing Indicator's Short Layout Name

You can choose the font which is used by R-WIN Indicator for drawing short layout name and current time on indicator's horizontal bar.

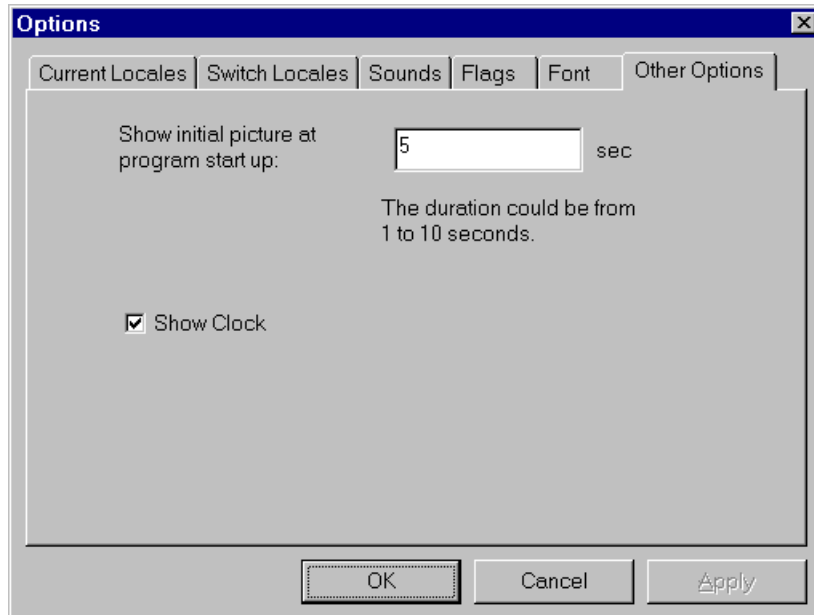
Open R-WIN menu and choose **Options...** menu command. **Options** dialog box appears. In the **Options** dialog box of R-WIN Indicator chose *Font* tab.



Press **Font...** button. The dialog box **Font** appears. Choose desired font. To save changes press **OK** button. If you selected very big size of font R-WIN Indicator's sizes will grow.

Changing Other Options

Open R-WIN menu and choose **Options...** menu command. **Options** dialog box appears. In the **Options** dialog box of R-WIN Indicator choose *Other Options* tab.



You can set the duration for the R-WIN splash window that appears on the screen at every start of R-WIN. You can set the duration between 1 and 10 seconds. If you set the duration 559 seconds, the splash window will not appear at all.

Clear the check box *Show Clock* if you don't want to display current time on R-WIN Indicator's horizontal bar. Press **OK** button to save changes.

If Cyrillic letters disappeared

Some applications at run time install their own fonts and work with these fonts. Some of these fonts can have non-standard names and are not substituted by equivalent Cyrillic fonts included in R-WIN. Unfortunately, the examples of such a program are applications included in MS Office 95.

These programs use in the dialog boxes non-standard font with name DIALOG. Some applications can not correctly select fonts according to current keyboard layout. If you do not see Cyrillic letters in one application, do not try to delete and to install fonts yourself, do not try to uninstall and reinstall R-WIN. Try to get the answers from our support by Internet or by phone. In most cases the problem already has a solution. (To find our phone number and Internet addresses choose R-WIN Indicators **About...** menu command.)

Windows 95 and Windows NT allows you to choose individual fonts for menu, dialog boxes and messages. The settings can be individual for every user and are saved in *font scheme*. Some applications (for example software for graphical cards) and not experienced users can change the font scheme, so that the Cyrillic will disappear in some graphical elements of Windows (menu etc.). Even if all Cyrillic fonts are correctly installed!

In this case try to restore so called Windows Standard font scheme. Choose Windows menu command: **Start/Settings/Control Panel**. Select item **Display**. Dialog box *Display Properties* appears. Select *Appearance* tab. Open *Scheme*: list and select item *Windows Standard*. Press **OK** button.

If it restoring Windows Standard scheme doesn't work try to reinstall R-WIN fonts. To reinstall R-WIN fonts choose Windows menu command: **Start/Programs/R-WIN Setup**. (If R-WIN is installed and you run R-WIN Setup program you can choose not to install all R-WIN components. Set check mark *Fonts* in R-WIN Setup **Installation Options** dialog box.)

If reinstalling R-WIN fonts doesn't work try this. Uninstall R-WIN completely (see next section) and then install R-WIN again with default options (press **Continue** and **OK** buttons in R-WIN Setup dialog boxes). After this R-WIN Setup program will try to install all fonts optimally.

Uninstalling R-WIN

To delete R-WIN from the system open Windows menu **Start/Programs/R-WIN** and select command **R-WIN Uninstall**. Uninstall program deletes R-WIN files and return the previous state of Windows operating system (the state before installing R-WIN). To take changes in effect restart Windows.

R-WIN will be deleted from the system.

CAUTION! For successful uninstallation of R-WIN and restoring Windows state it is required:

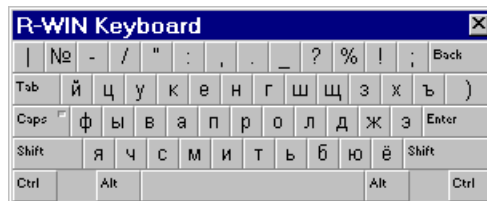
1. Before installation R-WIN you must not use other multilingual support programs that are incompatible with R--WIN.
2. After installation R-WIN you must not delete Windows system files from directories (folders): *Windows\System, Windows\System32and Windows\Fonts*.

Chapter 4 R-WIN 32 Applications

R-WIN Keyboard

R-WIN Keyboard shows the layout of letters and symbols on the keyboard depending on the current keyboard layout and depending on the special keys that are currently pressed: **Ctrl**, **Shift**, **CapsLock**, **NumLock**.

Normally all Cyrillic keyboards have the dual alphabet on the keys: Latin and Cyrillic. This program is useful for the users who have the keyboard with only Latin letters on the keys. For example, US, German or French keyboard. When the current keyboard layout is Cyrillic this application shows the layout of Cyrillic letters on keys so that it is possible to type in Cyrillic looking at this application on the screen.



To activate R-WIN keyboard menu click by right mouse button in R-WIN Keyboard panel (in the grey field with keys).

Sometimes you need to select proper fonts for current keyboard layouts using **Fonts...** menu command. For example, if the first keyboard layout you selected in R-WIN Indicator's Options dialog box is Latin-based (for example, German) and second keyboard layout is Cyrillic-based (for example, Russian) select any Western font for the 1st layout (for example, Arial, script: Western) and any Cyrillic font for 2nd layout (for example, Arial, script: Cyrillic).

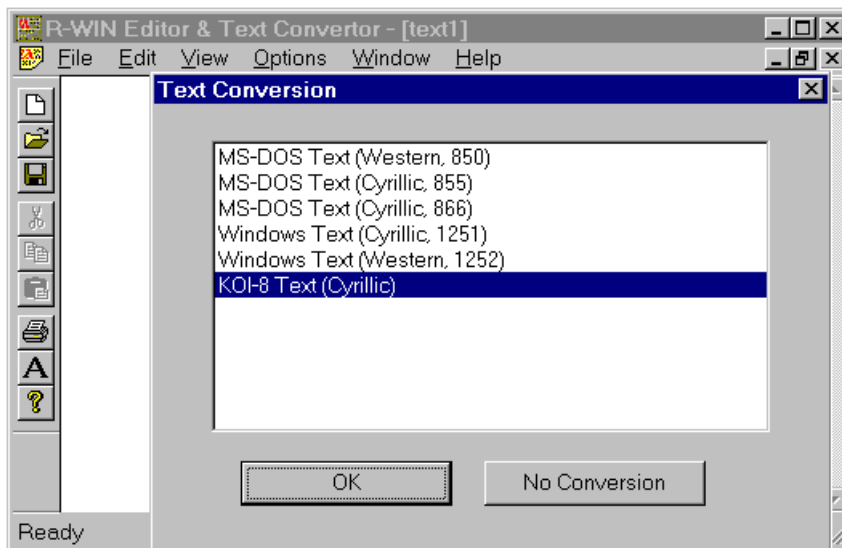
You can change the view of R-WIN keyboard on the screen. You can hide upper and lower rows of keys using **Upper Row** and **Lower Row** menu commands. You can make the R-WIN Keyboard to be at the top of all other windows (**Always On Top** menu command).

R-WIN Editor & Text Converter

R-WIN Text Editor allows you to work with multiple files. It is very useful for work with Cyrillic documents prepared in different code pages (for example in code page Cyrillic KOI-8 that is very popular in Internet). Text editor automatically detects the code page of the text and can convert it to Windows code page.

R-WIN Text Editor can work only with files that are saved as simple text. For example, you can not open and view the documents that was saved in Word for Windows format. You must save Word documents as Text before opening in R-WIN Text Editor.

When editor opens a text file it analyzes the text and tries to detect the code page of this text. The *Text Conversion* dialog box appears. You can confirm the detected code page. Then the text is converted to Windows code page. In most cases R-WIN Text Editor detects the right code page but sometimes not. If the text was not converted properly close the file without saving and open it again. Then the editor again will prompt you to confirm the code page of opening text. Try to select another code page.



Using R-WIN Text Editor & Converter you can create new text file, open existing text, edit it, select font for the text, preview the text before printing, print the text and save file in desired code page.

You can choose the font which will be used by default for all files that you open in text editor (**Options/Set Default Font...** menu command). And you can choose the font only for current text (**View/Set Font...** menu command).

The file size of the text you can open is limited by nearly 60 Kb in Windows 95 and 1 Mb in Windows NT.

R-WIN Keyboard Editor

Keyboard Editor allows you to create used defined keyboard layouts and then to add these layouts to the list of keyboard layouts provided by Windows Control Panel.

At your work with Keyboard Editor follow the steps:

Choose **File/Open Template...** menu command to open existing layout template (file with extension *.lay) or choose **File/New Template** menu command to create new layout template.

You can set the font which will be used for displaying symbols on the keys and symbols in the horizontal list of characters (**View/Font of Keys** and **View/Font of Character List** menu commands).



Keyboard Editor allows you to use special keys (*Ctrl*, *Alt*, *Shift*) and their combinations to assign on what special keys are pressed with the key).

Click by left mouse button to one of the keys on the Keyboard Editor panel (it makes selected key «current edited key») and then click to the desired symbol or letter in the horizontal character list.

If you don't see the desired symbol in the horizontal character list open the *Script*: box and choose another character set (current font can provide many character sets). It is required because most of the fonts in Windows NT è Windows 95 are prepared in Unicode table and each font is divided to many character sets, for example Western (Latin-1), Cyrillic, Greek, Turkish and others.

It is convenient to use normal keyboard to assign the symbols to the keys in Keyboard Editor panel. For example, switch your keyboard to Russian mode (flag on R-WIN Indicator becomes Russian), choose Cyrillic character set in the *Script*: box, click by left mouse button to any key on the Keyboard Editor panel and press any key with Russian letter on the keyboard. You see that Russian letter will be assigned to the selected key on the Keyboard Editor panel.

To assign Latin letters to keys on Keyboard Editor panel you must choose Latin character set from *Script*: list and switch your keyboard to Latin mode (in this example flag in R-WIN Indicator should become US, German, French etc.)

Press TAB key on the keyboard to move between the neighboring keys on Keyboard Editor panel.

The recommended order of editing new layout is: 1) edit all keys in lower case (small letters), 2) then edit all keys in upper case (capital letters, Shift mode), 3) then edit all keys in Caps Lock mode, 4) as the last step (not required) edit some keys in CTRL+ALT mode and in CTRL+ALT+SHIFT mode.

To edit keys in Shift mode (upper case): click SHIFT key on Keyboard Editor panel by left mouse button. Then edit all the keys on Keyboard Editor panel.

To edit keys in Caps Lock mode: click CAPS LOCK key on Keyboard Editor panel by left mouse button. Then click all the keys on Keyboard Editor panel which will depend on pressing the CapsLock key on normal keyboard (in most cases you have to click all the alphabet letters and do not click other symbols).

To edit keys in CTRL+ALT+key mode: click CTRL key on Keyboard Editor panel by left mouse button. Then edit some the keys on Keyboard Editor panel.

To edit keys in CTRL+ALT+SHIFT+key mode (the same as ALTGR+SHIFT+key): click CTRL key and SHIFT key on Keyboard Editor panel by left mouse button. Then edit some the keys on Keyboard Editor panel.

Layout Type options:

Alt Gr option - set this option if you have German or French keyboard. In this case pressing Alt Gr key on the keyboard will be equivalent to pressing *Ctrl+Alt*

Shift Lock option - pressing *Shift* key on the keyboard will cancel *Caps Lock* mode.

Save the template layout as file with extension *.lay.

Before using your custom layout in Windows you must save it in Windows format (*.dll or *.kbd). To save the layout in Windows format use **Layout Wizard** included in Keyboard Editor.

Choose **File/Layout Wizard...** menu command follow the steps and your layout will be saved and included in the list of keyboard layouts of Windows Control Panel as additional layout variation.

Then select your layout variation in Windows Control Panel and make it current. For more information about selecting additional keyboard layouts and layout variations see section *Installing Additional Keyboard Layouts* of this User's Guide.